

# Academy Status



## All Saints Carshalton C of E Primary School

**31 October 2016**

# SDBE Schools



- **106 Schools (92 Primary, 14 Secondary)**

## ***7 academies***

- **St Mark's CE Primary (REAch 2) - Croydon**
- **Ark All Saints (ARK) - Southwark**
- **St Mark's (CfBT) - Merton**
- **Bacon's College (SDBE/PPHCT) - Southwark**
- **St Martin-in-the-Fields Girls School - Lambeth**
- **St Cecilia's C of E Secondary - Wandsworth**
- **Wilson's Grammar School - Sutton**

# Academies - The key differences



<b>Academy</b>	<b>VA School</b>
<b>Contract</b>	<b>Statute</b>
<b>Independent</b>	<b>Maintained</b>
<b>Academy Trust + GB</b>	<b>Governing Body</b>
<b>Budget from EFA</b>	<b>Budget from LA</b>
<b>100% funding</b>	<b>10% governors' liability</b>
<b>Governors' determine curriculum</b>	<b>National Curriculum</b>
<b>Governors' determine Pay and Conditions</b>	<b>National Pay and Conditions</b>

# Academies - The similarities



<b>Academy Trust</b>	<b>VA School - GB</b>
<b>Admission authority</b>	<b>Admission authority</b>
<b>Employer of staff</b>	<b>Employer of staff</b>
<b>Buildings/land on lease from Trustees</b>	<b>Buildings/land owned by Trustees</b>
<b>C of E Character</b>	<b>C of E Character</b>
<b>SIAMS inspection</b>	<b>SIAMS inspection</b>
<b>OFSTED inspection</b>	<b>OFSTED inspection</b>

# Academies - The key differences

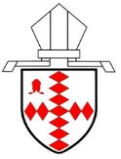


<b>Stand-alone Academy</b>	<b>Diocesan MAT</b>
<b>Funding agreement between Academy Trust and Secretary of State</b>	<b>Funding agreement between MAT and Secretary of State;</b>
<b>One school</b>	<b>A number of schools</b>
<b>Opportunities and risks sit with Trust/GB</b>	<b>Opportunities and risks sit with MAT</b>
<b>Broker all services</b>	<b>MAT provides some services from school budget top slice</b>
<b>Trust accountable for standards</b>	<b>MAT accountable for standards and policies</b>
<b>Single GB</b>	<b>Local GB for each school</b>

# Vision for SDBE MAT



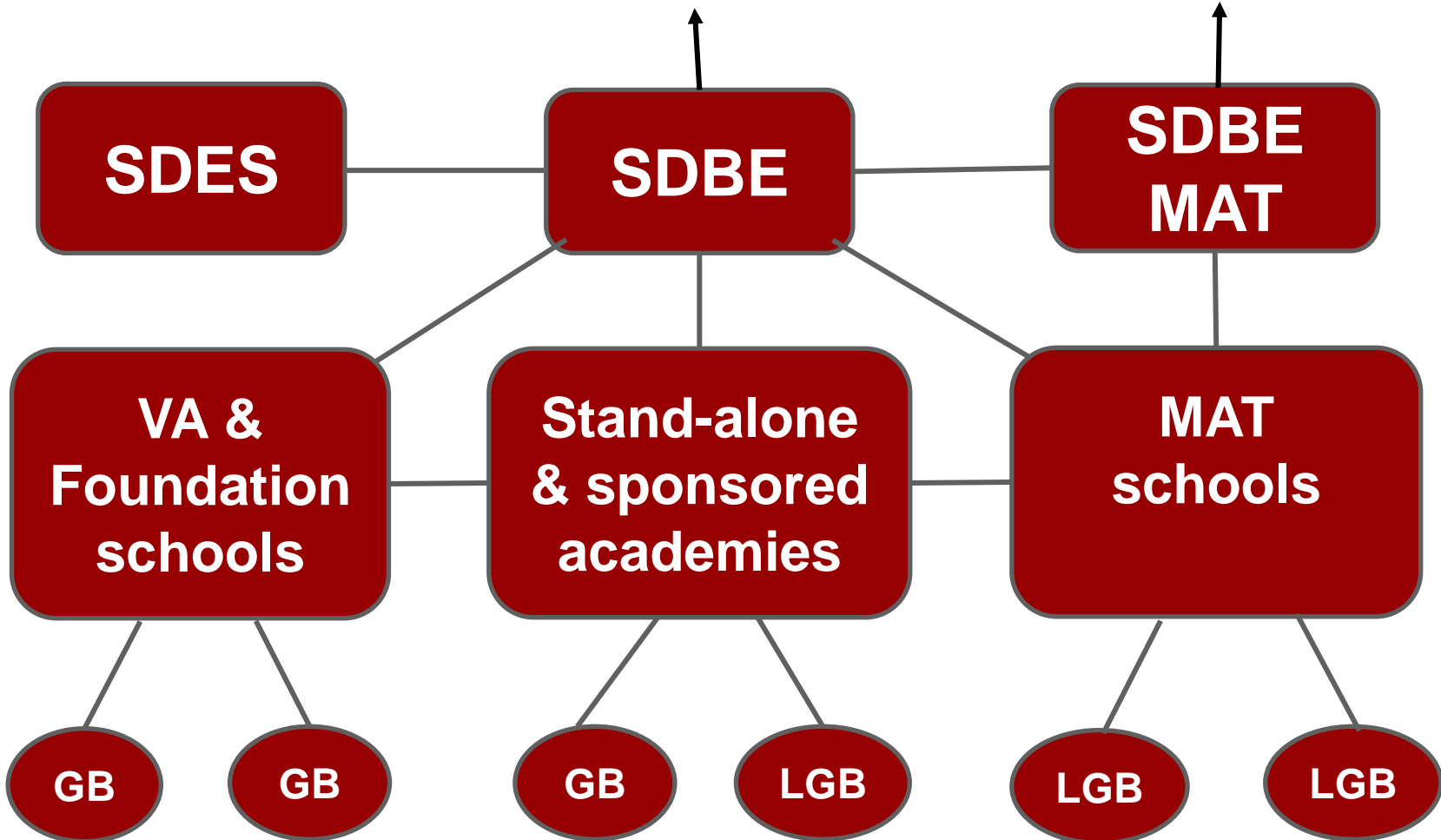
**Our vision is to establish a culture and context in which schools can grow and flourish and provide an excellent education with Christian values at its heart. We will seek to enable all children and young people in our schools to realise their God-given potential, aspire to exceed their expectations and to build a Christ-centred community.**



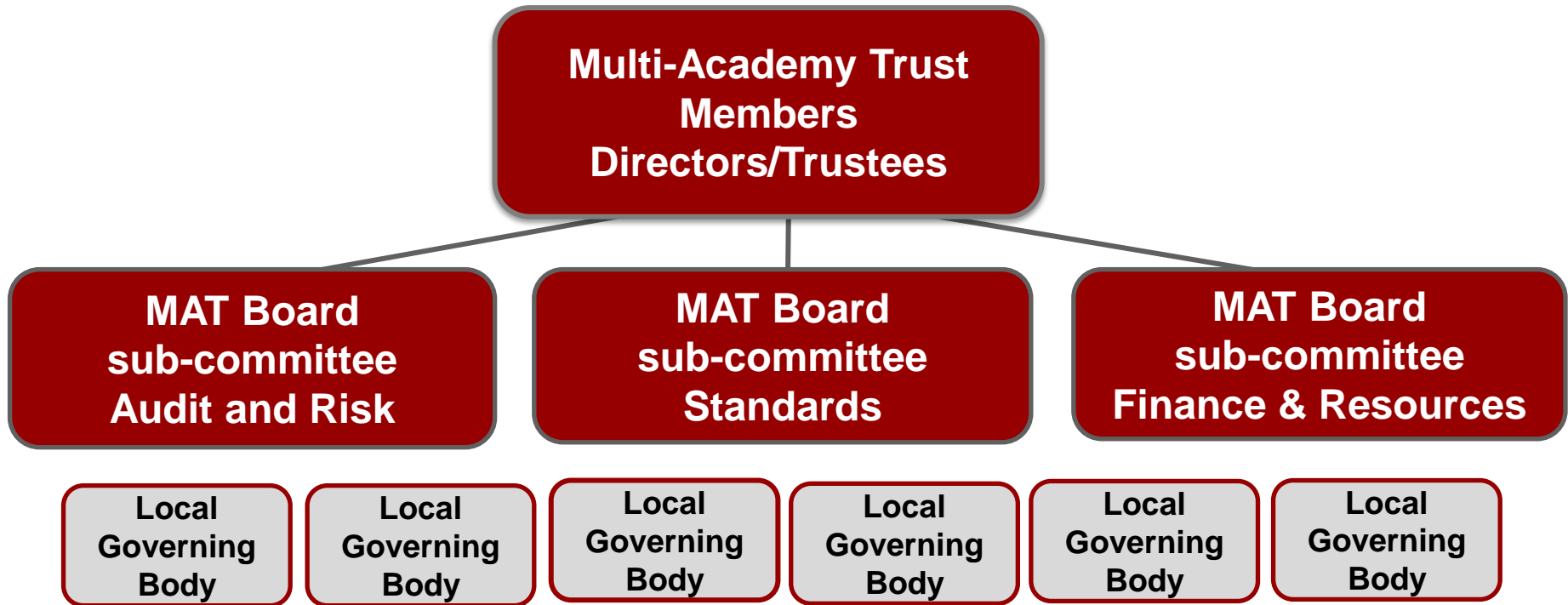
Accountable to:

Diocesan Synod

DFE/EFA

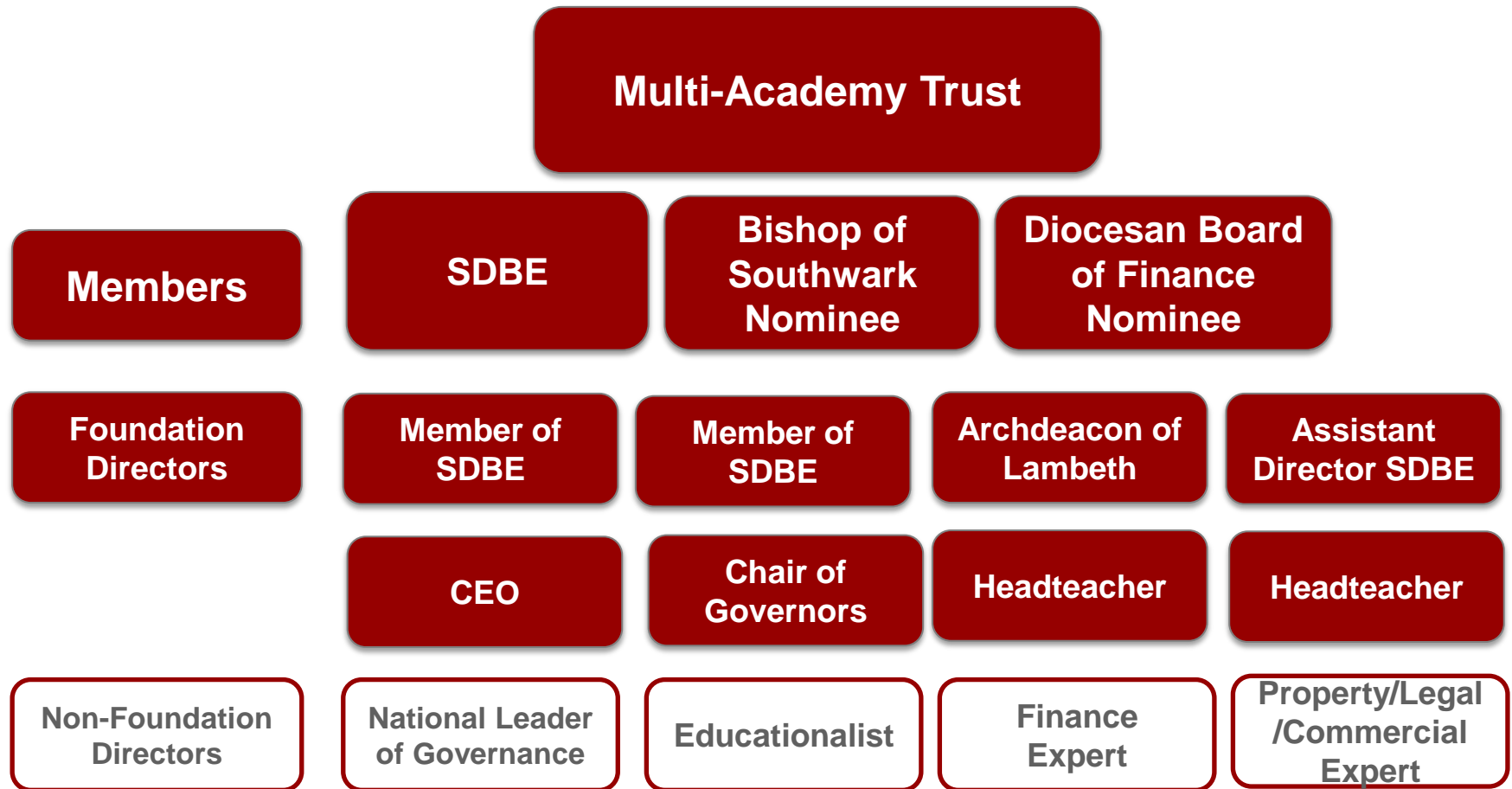


# SDBE MULTI-ACADEMY TRUST





# SDBE MULTI-ACADEMY TRUST



# Services



- School Improvement - Academy Improvement Partners (top Slice)**
- Human Resources - Core (top slice)  
Additional work (funded by academy)**
- Buildings - Core (top Slice)  
- Consultant (funded by academy)**
- Education Consultants - Determined by School Improvement Plan**
- Legal Support - Core service**
- Finance - Core service**
- Insurances - Core service**

# Local Governing Body



- Technically a sub-committee of the MAT with delegated powers**
- Scheme of delegation**
- Membership**

# Why strong schools join Diocesan MATs



- **Diocesan MATs and their schools share the same mission**
- **Schools trust their Diocese, already feel part of the Diocesan family and wish to extend this relationship by joining its MAT as a way of securing and strengthening the Christian ethos of the school**
- **The strong collaboration with shared accountability offered by MAT membership can lead to better outcomes for pupils and help schools meet expectations**
- **Staff can share thinking and planning with like-minded colleagues to spread expertise and tackle challenges**
- **LGBs can share strategic thinking, combine skills and support each other**

# Why strong schools join Diocesan MATs



- **Staff who have a common purpose can be shared across more than one school, enabling creative solutions to recruitment challenges and staff retention**
- **MAT schools find it easier to recruit, share, fund and deploy specialist expertise (eg, data analysis, finance, health and safety) and provide enrichment activities**
- **Shared professional development can more easily be arranged**
- **The economies of scale and collective purchasing made possible within larger groups help schools cope better with shrinking budgets**
- **In these uncertain times Diocesan MATs offer schools a strong sense of stability and continuity**